



**PREMIER BUILDING
PRODUCTS Ltd**

SUPERTECH BROCHURE - PREMIER GROUP BUILDING PRODUCTS

GUIDE

2021

PREMIERBUILDINGPRODUCTS.CO.UK

+44 (0)1428 654781

enquiries@pbp.uk.com



A1 Fire Classification
BS EN 13501-1: 2018

Supertech Weatherboard

Supertech Weatherboard is a simple to install, fully ventilated rainscreen cladding system which has an appearance similar to that of timber but the durability and strength of cement.

Made from refined cellulose fibre cement, Supertech Weatherboard has high levels of impact resistance, excellent weathering properties and outstanding levels of durability. With a minimum life expectancy of 30 years, it is a façade which will withstand the demanding test of time.

Supertech Weatherboard is lightweight, requires low maintenance, can be used in the same way as timber and allows you to create truly stunning façades.

Offering a range of colour painted finishes, Supertech Weatherboard is an attractive alternative to traditional timber boarding and plastic effect PVCu cladding. Supertech Weatherboard can be installed either horizontally in a traditional lapped style (most popular way) or in a vertically lapped style.

Used by architects, national house builders, homeowners and contractors Supertech Weatherboard is factory finished and provides substantial design opportunities.

Key features



Fire classification to BS EN 13501-1: 2018 A1

- UK factory applied colour
- High levels of weather resistance
- Easy to install and lightweight
- Range of colour matching aluminium trims available
- Resistant to rot, fungus or insect attacks
- Able to match to any RAL, BS or NCS colour
- Low maintenance, long performance life

Suitable for the following construction types



Steel frame



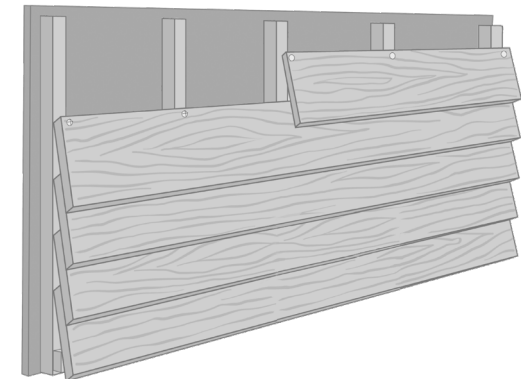
Timber frame



Modular / Offsite



Masonry



Designed to stand the test of time

Nominal density	1380kg/m ³
Fibre-cement flat sheets.	BS EN 12467:2012+A2:2018 Class A
Thermal conductivity	0.30 W/mk
Moisture content	≤ 8%
Moisture movement (EMC to saturated)	≤ 0.06% - 0.08%
Reaction to fire BS EN 13501-1:2018	Class A1 (non-combustible)
Biological resistance	Highly resistant
Surface condition	Front face: Painted Back face: Textured
Substrate durability (life expectancy min)	30 years
Standard board size	3660 x 190mm
Special order	3660 x 230mm
Thickness	Natural Painted 7.5mm 7.5mm
Weight	10.95kg/m ² 11.10kg/m ²
Dimensional tolerance	
Length	+3/-3mm
Width	+2/-2mm
Thickness	+0.6/-0.2mm
BBA Certification Number	19/5708

Calculation of board quantity

190mm - Board coverage 0.59m² per board @ 30mm over lap.

230mm - Board coverage 0.73m² per board @ 30mm over lap.

Workability

Our Supertech Weatherboard can be cut, drilled and nailed with conventional woodworking tools in a similar fashion to timber. For cutting the product in any volume, we recommend the use of an RCM Poly Crystalline Diamond Dart Blade to avoid excessive wear on other blades. Alternatively, RCM offer a complete fabrication service, please contact our technical department for details. Please adhere to health & safety guidance when cutting Supertech Weatherboard.

Supertech Weatherboard is installed using screws or nails in a secret fix method. There is no requirement for pre-drilling when using recommended fixing centres. For the top and bottom planks, where fixings are visible, we are able to supply colour-matched fixings.

The Supertech System

Requests from our clients to offer the Supertech range as an element in a full cladding system has been growing considerably.

Although we aim to offer our clients maximum flexibility, we recognize that bringing all of the key components under one supplier makes our offer far more appealing and helps reduce risk of product incompatibility issues.

A-rated, fibre cement Supertech cladding is a fire safe, low maintenance and durable solution for those wanting to improve both the appearance and efficiency of their home. Furthermore, it is easy to install and can be fitted to a range of timber and metal sub frames.

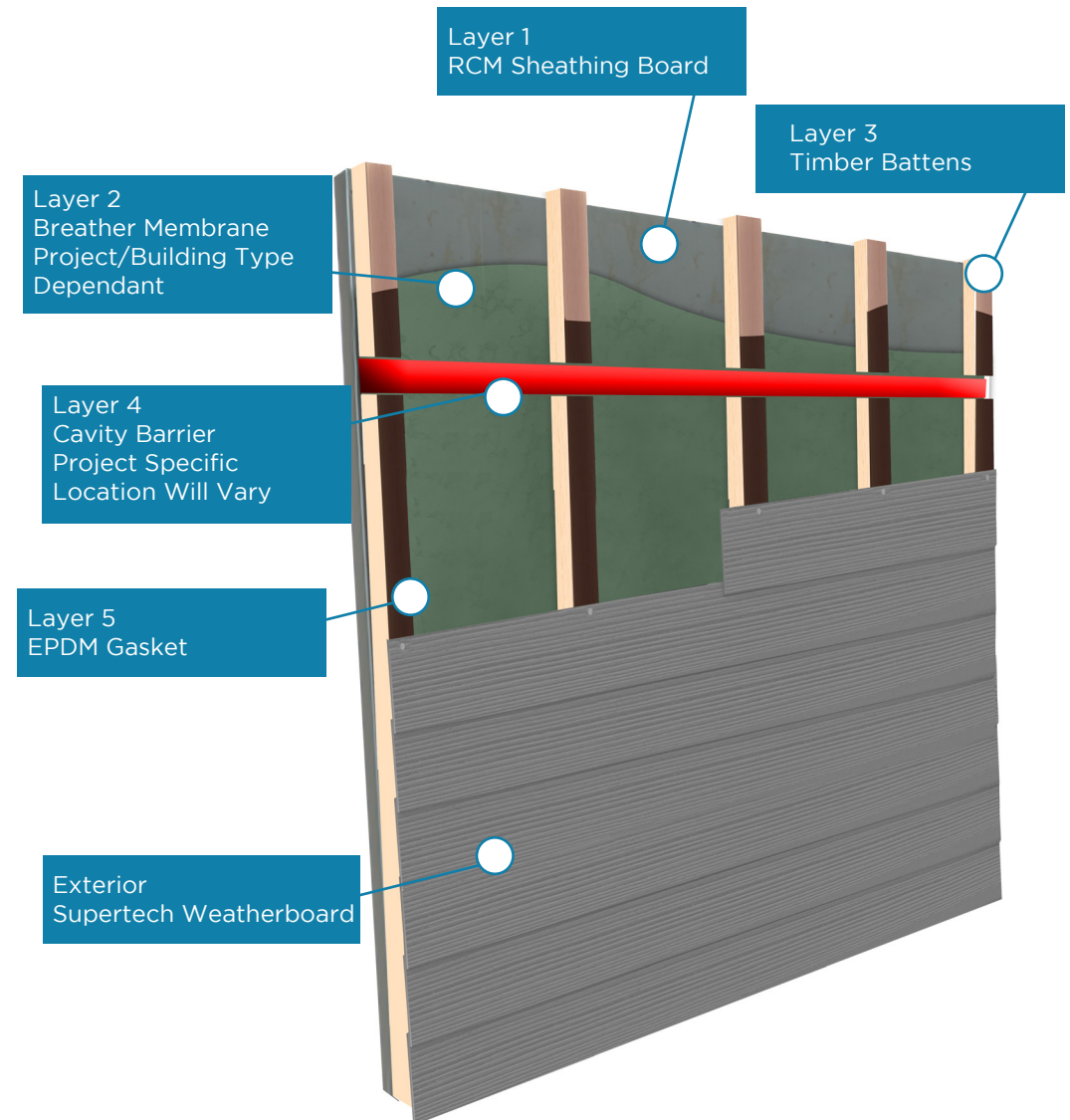
As with all of our façade systems, we recommend a layer-by-layer approach to installation; Supertech Weatherboard can be installed in 5 key layers in-to-out:

Layer 1, the substrate

We recommend the use of RCM sheathing boards as an ideal substrate. We offer a range of A rated fibre cement and gypsum board options for this purpose.

Layer 2, the breather membrane

Project and building dependant, a suitable breather membrane (RCM can supply) will provide a necessary barrier against water penetration from the outside while allowing migration of water vapour through the membrane from inside the building.



Installing Supertech Weatherboard

Layer 3, the sub frame

Traditionally the sub frame for Weatherboard has comprised of 38mm deep vertical timber battens which allow for a free flowing cavity between the breather membrane and the weatherboard. Where required, Benx offer an alternative range of A1 Non combustible support frames, these include:

Aluminum Z profile. Cavity depth 38mm, this is typically used for low to medium rise applications and can be fixed back to both masonry and framed buildings. (please refer to image below)

Allface Helping Hand system. Cavity depth 50mm-300mm. This is typically used on medium to high rise applications where the cavity depth needs to vary and can be fixed back onto either masonry or framed buildings. (please refer to image below)



Please note that timber battens are not part of our portfolio.

Layer 4, Cavity Barriers

The use and specific location of cavity barriers behind this ventilated weatherboard solution can vary depending on building make up, use and the various stakeholders involved.

RCM offer a range of intumescent cavity barriers which are typically used in conjunction with either a timber batten or on our Z profile sub frame. The use of an intumescent cavity barrier allows for drainage and air flow within the cavity whilst acting as a smoke and heat barrier, activating if required.

On the Allface support frame, this requires the use of OSCB's (not shown on this schematic) which can vary considerably depending on cavity depth. RCM are also able to supply these when supplied as a complete system.

Layer 5, EPDM Gasket

An EPDM gasket (ethylene propylene diene terpolymer - an extremely durable synthetic rubber tape) is fixed to each vertical element to provide additional weather protection (and prevent premature rotting if using timber).

Our A1 Supertech Weatherboard, which is coated at our production facility in Staffordshire, is then simply screwed or nailed through the EPDM gasket onto the subframe using the appropriate RCM supplied fixings.

With BBA accreditation and a flexible colour range, all to A1 classification, we believe our offer to be very attractive to the market.



System Details

System components

As part of our offer to our clients, we can assist with providing a range of standard system details for the Supertech product or system.

Where there is no standard detail for a particular project, then we will assist the specifier with the most suitable solution, working within the boundaries of the product and other stakeholders such as Building Control, BBA or NHBC for example.

We have provided a small selection of the system details available. For a more extensive range, please contact our technical department or your regional RSM for more information.

Timber Batten Examples

NOTES -

Notes

Fixings
Countersunk head screws - 4.2mm shank Ø, 42mm length with a 10mm Ø, with a min 500 hours salt spray corrosion resistance Nail fixing - 2.65 x 40mm with a 7mm Ø head annular ring shank - to BS 1202-1:2002
For coastal/marine environments please consult Benx Technical Service

Cavity Barrier
Please consult the manufacturers fixing details.

No	DESCRIPTION	DATE
REVISION		
ROOFING AND CLADDING MATERIALS LTD SUPERTECH WEATHERBOARD BASE DETAIL USING STARTER PROFILE		
SCALE	DRAWN	PM
DATE	CHECKED	
DWG.No RCM ST001		
RCM LIMITED		
RCM Ltd, 27 Riverside Road, Parkhouse Rd Estate West, Newcastle Under Lyme, Staffordshire, ST5 7JF		



Non Combustible Z Profile Examples

NOTES -

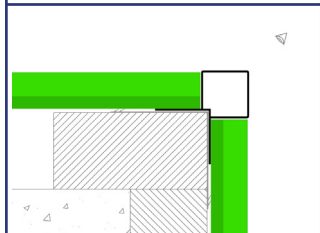
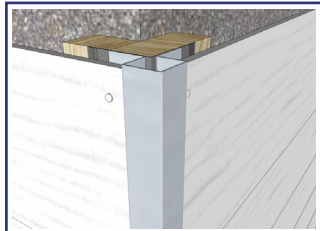
Notes

Fixings shown are illustrative and will be subject to substrate type.

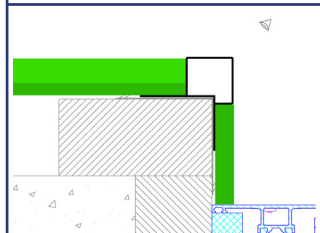
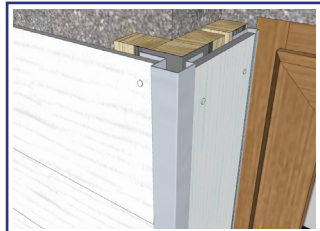
No	DESCRIPTION	DATE
REVISION		
ROOFING AND CLADDING MATERIALS LTD SUPERTECH WEATHERBOARD EXTERNAL CORNER (ASYMMETRICAL)		
SCALE	DRAWN	PM
DATE	CHECKED	
DWG.No RCM STM002		
RCM LIMITED		
RCM Ltd, 27 Riverside Road, Parkhouse Rd Estate West, Newcastle Under Lyme, Staffordshire, ST5 7JF Tel: 0800 6124662		

The complete system

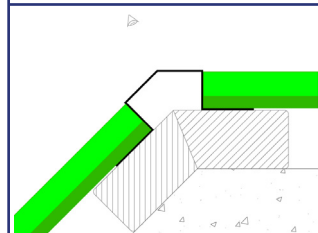
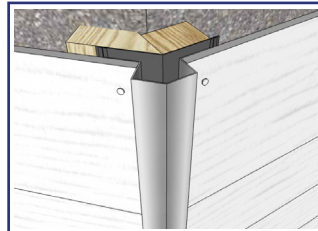
The Supertech Weatherboard range comes with a full collection of colour matched screws, aluminium profiles and accessories providing a complete cladding solution. Please refer to the Supertech Weatherboard installation guide for more information on the installation of profiles.



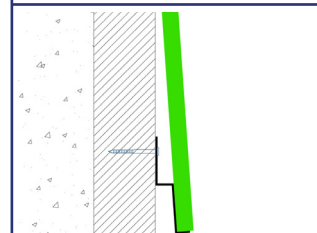
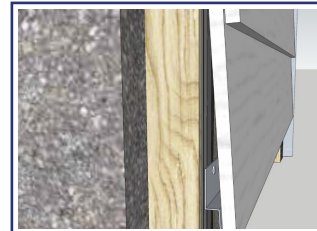
Symmetric external corner



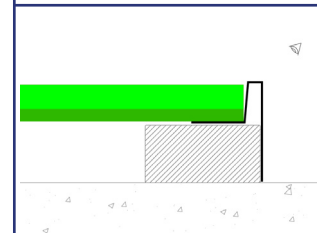
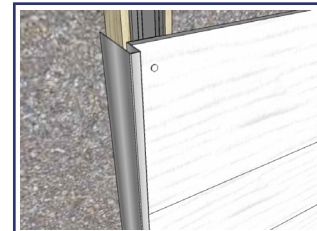
Asymmetric external corner



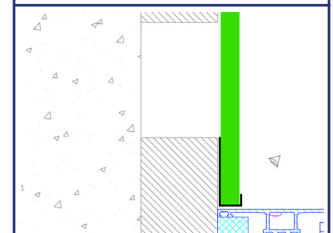
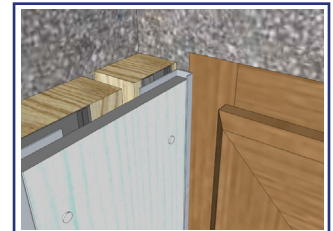
External bay corner



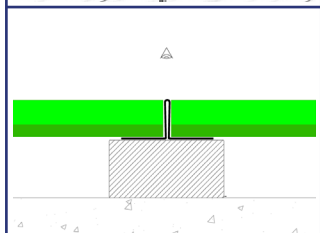
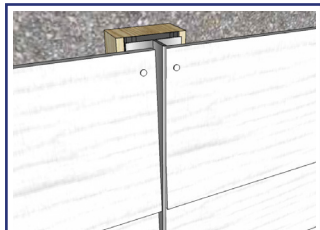
Starter profile



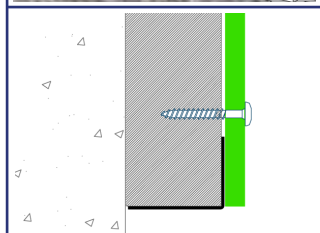
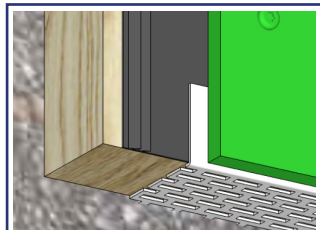
Cap end and batten cover



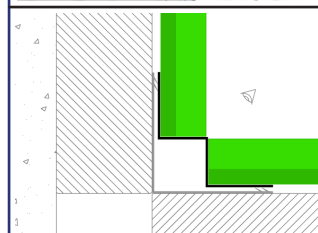
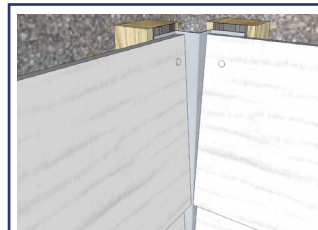
Small cap end profile



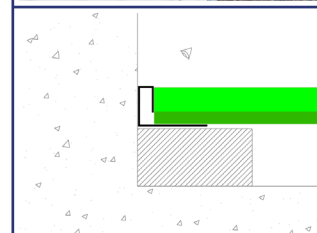
Vertical joint profile



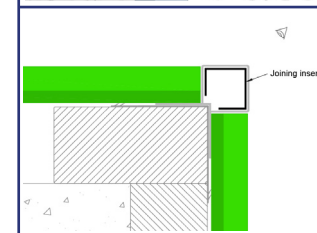
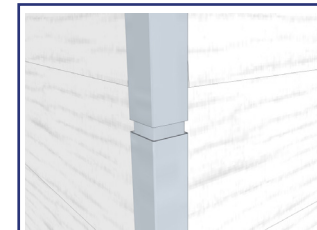
Perforated profile



Internal corner



Large cap end profile



External corner joining trim

Beautiful, timeless facades




A spectrum of colours for creativity

Supertech Weatherboard has a unique colour palette and comes in a standard range of painted colours. Whether your project is rural or urban, it is important that the building blends seamlessly into the landscape. As a result, just in case we don't have the colour you require in our standard collection, we are able to match Supertech Weatherboard to any RAL, BS or NCS colour. Minimum quantities required.

The striking and beautiful painted collection

The painted collection is made up of 18 of the most popular RAL colours used for weatherboard in the UK. With a range spanning from white to black, there is a colour to suit your landscape and create your dream project. We offer small minimum quantities and short lead times as standard.



Fire Rating:  Classification on all colours



Traffic White
RCM/WP01/S



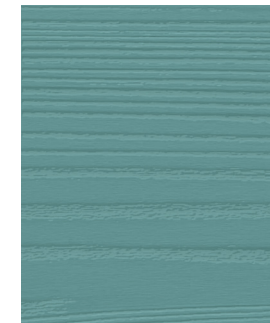
Light Grey
RCM/WP02/S



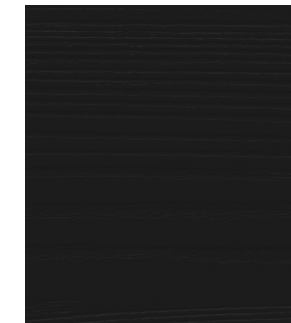
Oyster White
RCM/WP03/S



Light Ivory
RCM/WP04/S



Pastel Turquoise
RCM/WP06/S

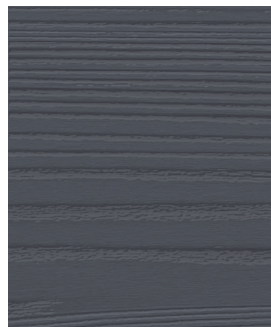


Jet Black
RCM/WP07/S

A spectrum of colours for creativity



Iron Grey
RCM/WP08/S



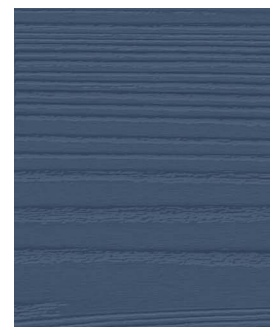
Dark Grey
RCM/WP09/S



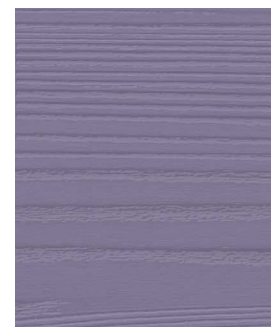
Khaki Brown
RCM/WP10/S



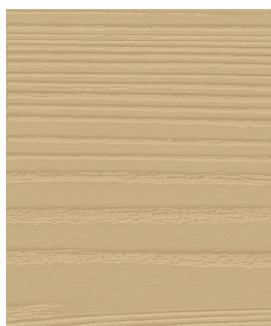
Dark Brown
RCM/WP11/S



Lavender Blue
RCM/WP12/S



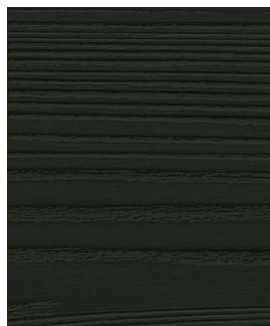
Lilac Blue
RCM/WP13/S



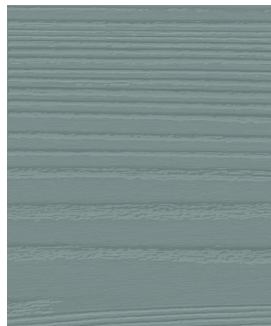
Sand Yellow
RCM/WP14/S



Red
RCM/WP15/S



Pine Green
RCM/WP16/S



Blue Grey
RCM/WP17/S



Grey Brown
RCM/WP18/S



Grey Green
RCM/WP20/S

Thank you for taking the time to review our Supertech Weatherboard brochure.
If you require any further information on our products or services, please contact us.

Sales  0800 612 4662  sales@benx.co.uk

Technical  0800 488 0531  technicalservices@benx.co.uk  www.benx.co.uk



Disclaimer

By using or accessing the brochure, you agree with the following Disclaimer. Benx Limited ('the Company') reserves the right to terminate, revoke, modify, alter, add and delete any of the information in the brochure. The Company shall be under no obligation to notify the user of the amendment to the contents of the brochure. Computer generated images, walkthroughs and render images used on this brochure are the artist's impression and are an indicative of the actual designs

The information in this brochure is presented as general information and no representation or warranty is expressly or impliedly given as to its accuracy, completeness or correctness. It does not constitute part of a legal offer or contract. While every effort has been made to ensure its accuracy, this brochure may unintentionally include inaccuracies or errors. The user must verify all the details and specifications independently with the Company prior to concluding any decision to purchase or use the Company's products.

In no event shall the Company be liable to the user or any third party for damages, losses and causes of action (including but not limited to negligence), errors, injury, whether direct, indirect, consequential or incidental, suffered or incurred by any person/s or due to any use and/or inability to use this brochure or information, action taken or abstained through this brochure. While every effort has been made by the Company to ensure that information in the brochure is up to date, accurate and correct, the users are requested to make their independent enquiry before relying upon the same.